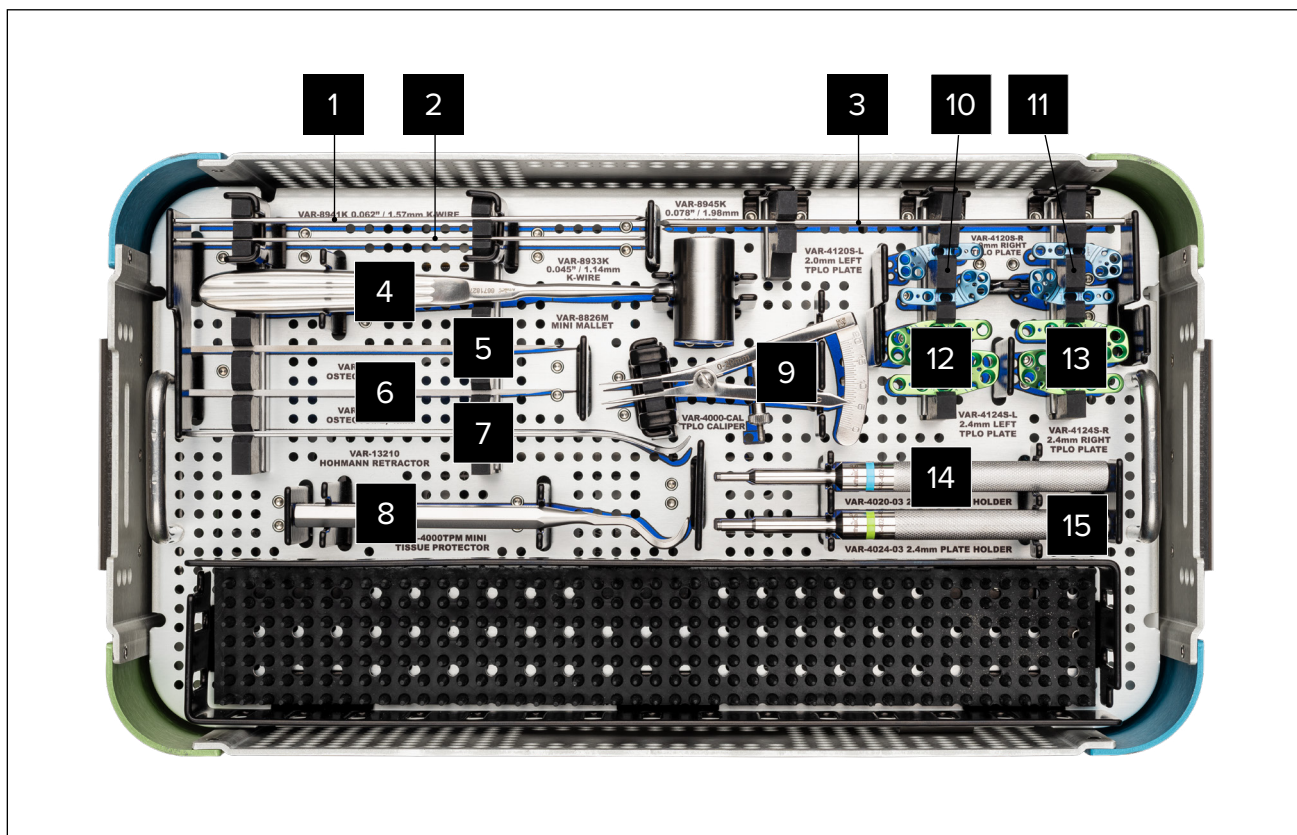


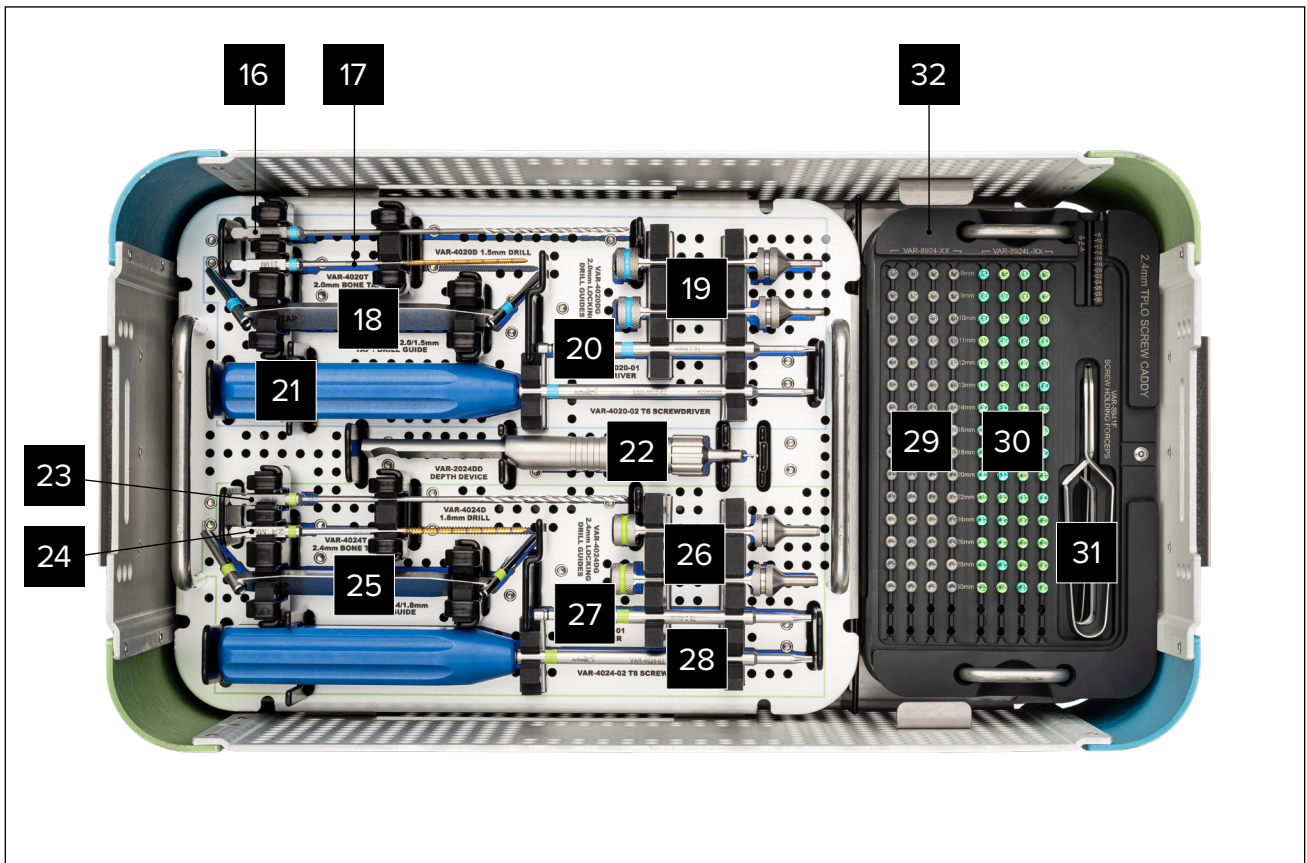
2.0 mm and 2.4 mm TPLO System

VAR-40204S



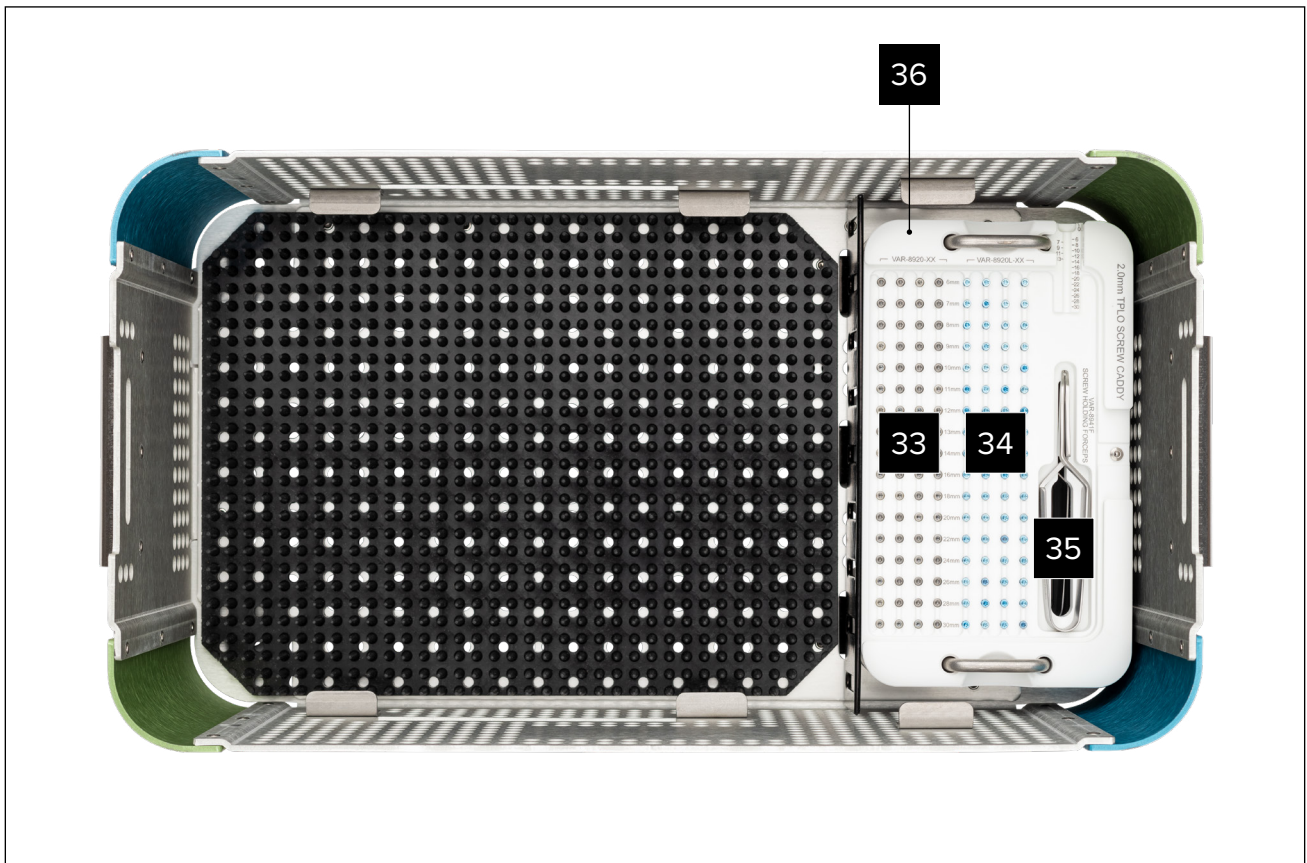
Pic.	Item Number	Qty.	Description
1	VAR-8941K		K-Wire, 1.57 mm (0.062 in)
2	VAR-8933K		K-Wire, 1.14 mm (0.045 in)
3	VAR-8945K		K-Wire, 1.98 mm (0.078 in)
4	VAR-8826M		Mini Mallet
5	VAR-13203-02		Osteotome, 2 mm
6	VAR-13203-04		Osteotome, 4 mm
7	VAR-13210		Hohmann Retractor
8	VAR-4000TPM		Mini Tissue Protector
9	VAR-4000-CAL		TPLO Caliper
10	VAR-4120S-L		TPLO Locking Plate, 2.0 mm, standard, left
11	VAR-4120S-R		TPLO Locking Plate, 2.0 mm, standard, right
12	VAR-4124S-L		TPLO Locking Plate, 2.4 mm, standard, left
13	VAR-4124S-R		TPLO Locking Plate, 2.4 mm, standard, right
14	VAR-4020-03		Locking Plate Holder, 2.0 mm
15	VAR-4024-03		Locking Plate Holder, 2.4 mm





Pic.	Item Number	Qty.	Description
16	VAR-4020D		Drill Bit, 1.5 mm
17	VAR-4020T		Bone Tap, 2.0 mm
18	VAR-4020TDG		Tap/Drill Guide, 2.0 mm/1.5 mm
19	VAR-4020DG		Locking Drill Guides, 2.0 mm
20	VAR-4020-01		T6 Driver, AO
21	VAR-4020-02		T6 Screwdriver
22	VAR-2024DD		Depth Device
23	VAR-4024D		Drill Bit, 1.8 mm
24	VAR-4024T		Bone Tap, 2.4 mm
25	VAR-4024TDG		Tap/Drill Guide, 2.4 mm/1.8 mm
26	VAR-4024DG		Locking Drill Guides, 2.4 mm
27	VAR-4024-01		T8 Driver, AO
28	VAR-4024-02		T8 Screwdriver
29	VAR-8924-08 to -30		Low Profile Nonlocking Screws, cortical, titanium, 2.4 mm × 8 mm to 30 mm
30	VAR-8924L-08 to -30		Low Profile Locking Screws, titanium, 2.4 mm × 8 mm to 30 mm
31	VAR-8941F		Screw Holding Forceps
32	VAR-4024SC-01		2.4 mm TPLO Screw Caddy





Pic.	Item Number	Qty.	Description
33	VAR-8920-06		Low Profile Nonlocking Screws, cortical, titanium, 2.0 mm × 6 mm to 30 mm
34	VAR-8920L-06		Low Profile Locking Screws, titanium, 2.0 mm × 6 mm to 30 mm
35	VAR-8941F		Screw Holding Forceps
36	VAR-4020SC-01		2.0 mm TPLO Screw Caddy



2.0 mm and 2.4 mm TPL0 System

VAR-402024S

Date of Surgery:

Surgeon Name:

Account:

Representative Contact Information:

Set Total:

Miscellaneous Notes:

To obtain a copy of a product's directions for use (DFU), which includes sterilization instructions, please visit our website at www.arthrex.com/edfu or contact your local representative.



Arthrex[®]
CANINE
InternalBrace™ SYSTEM

Arthrex[®]
Vet Systems